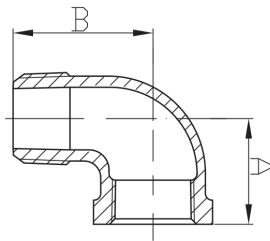


ASTM 90° STREET ELBOW

- Fabrication Standards: American Standard Class 150
- Material: ASTM A197/A197M
- Dimensions: ASME B16.3, B16.14
- Union Dimensions: B16.39
- Threads: ASME B1.20.1
- Size Available: 1/8" - 8"

92

90° Street Elbow



Size	Inch	1/8	1/4	3/8	1/2	3/4	1	1 1/4
	mm	6	8	10	15	20	25	32
Dim. (mm)	A	17.5	20.6	24.1	28.5	33.3	38.1	44.5
	B	25.4	30.2	36.6	41.2	48.0	54.4	62.2
Size	Inch	1 1/2	2	2 1/2	3	4	6	
	mm	40	50	65	80	100	150	
Dim. (mm)	A	49.3	57.2	68.6	78.2	96.3	130.3	
	B	68.3	82.8	98.0	114.6	144.5	204.0	

